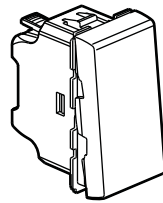
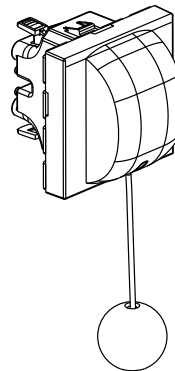


Mosaic™ 6 A pushbuttons

Cat. No.(s): 0 770 30/31/32/40/41/42/43/44 - 0 787 14/15/16
 0 791 30/40/42 - 0 792 30/32/40/42



0 770 30/31-0 791 30 - 0 792 30



0 770 44

1. USE

General lighting control mechanisms with or without signalling elements (indicator light, label holder).

The mechanisms can be flush-mounted or surface-mounted.

To be equipped with plate.

Antimicrobial* products:

These products are made of silver-ion based antimicrobial* material.

This technology eliminates bacteria, fungi and viruses without creating any immunisation or resistance effects (physical, rather than chemical, destruction).

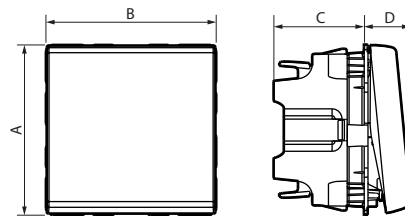
Particularly suitable for healthcare establishments (hospitals, clinics, nursing homes, laboratories, waiting rooms, etc.) and more generally for areas subject to hygiene restrictions (industrial, shared and restaurant kitchens, waste, etc.).

These products offer an additional way of ensuring the non-proliferation of bacteria, fungi and viruses without interfering with cleaning protocols

2. RANGE

Description	White antimicrobial*	White	Anthracite	Aluminium
Push-button - 1 module	0 787 14*	0 770 30	0 791 30	0 792 30
Changeover push-button 1 module	-	0 770 31	-	-
Changeover push-button with LED indicator - 1 module To be equipped with an indicator light	-	0 770 32	-	0 792 32
Push-button - 2 modules	0 787 15*	0 770 40	0 791 40	0 792 40
Changeover push-button 2 modules	-	0 770 41	-	-
Changeover push-button with LED indicator - 2 modules To be equipped with an indicator	0 787 16*	0 770 42	0 791 42	0 792 42
Changeover pushbutton NO-NC with pull-cord 1.5 m - 2 modules	-	0 770 44	-	-
Antimicrobial* 2-way push-button with label-holder - 2 modules	0 770 43*	-	-	-

3. OVERALL DIMENSIONS (mm)



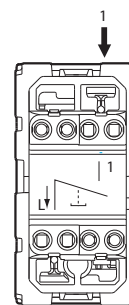
References	A	B	C	D
0 770 30/31/32 - 0 787 14 0 791 30 - 0 792 30/32	45	22.5	24	12.5
0 770 40/41/42/43 - 0 787 15/16 0 791 40/42 - 0 792 40/12	45	45	24	12.5
0 770 44	45	45	28.5	22

4. CONNECTION

Automatic terminals

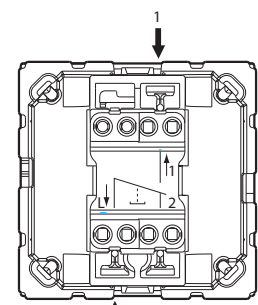
Terminal capacity: 2 x 2.5 mm²

Stripping length: 12 mm



Connect the phase in L

0 770 30/40 - 0 791 30
0 792 30/40 - 0 787 14/15

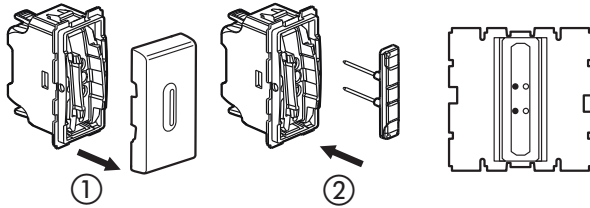


Connect the phase in L

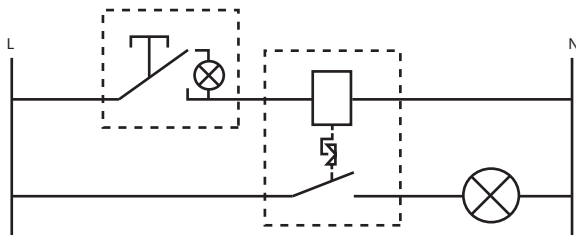
0 770 31/32/41/42/44
0 791 40/42 - 0 792 32/42
0 787 16

5. WIRING

Catalogue numbers: 0 770 32/42 - 0 787 16 - 0 792 32/42 - 0 791 42
Indicator function: Only possible with support frame Cat. No. 0 802 62.
Illuminated function: Illuminates the pushbutton in the dark.



- 1 - Unclip the rocker
 2 - Insert indicator light Cat. No. 0 676 86 or Cat. No. 0 676 87



6. TECHNICAL CHARACTERISTICS

■ 6.1 Mechanical characteristics

Impact tests: IK 04
 Protection against solid bodies and liquids: IP 31 D

■ 6.2 Material characteristics

Rocker:
 - ABS
 - White ABS RAL 9003 with antimicrobial* treatment
 for Cat. Nos 0 770 43 - 0 787 14/15/16

Base: PC
 Rocker support: PC

Halogen-free
 UV-resistant

Self-extinguishing:
 850°C/30 s for insulating components holding live parts in place.
 650°C/30 s for other insulating components.

■ 6.3 Electrical characteristics

Voltage: 250 V~
 Current: 6 A

■ 6.4 Climate characteristics

Storage temperature: - 10°C to + 70°C
 Operating temperature: - 5°C to + 35°C

7. CLEANING

Surface cleaning with a cloth.
 Do not use: acetone, tar remover, trichloroethylene.

■ 7.1 Resistance to cleaning products

Resistance to the following agents: Hexane (EN 60669-1), Methylated spirits, Soapy water, Diluted ammonia, Pure bleach deluted to 10%, Window-cleaning products, Pre-impregnated wipes.

■ 7.2 Resistance to hospital-type cleaning agents.

Resistance to the following agents: Anios, Surfanos, Bactillysine, Diluted hydrogen peroxide (35%).

Caution: Always test before using other special cleaning products.

8. ACCESSORIES

Lights for pushbuttons with indicator light:

Pushbuttons	Illuminated
0 770 32	
0 770 42	
0 791 42	0 676 86 (230 V / 0.15 mA)
0 792 32	0 676 87 (12/24/48 V)
0 792 42	
0 787 16	

9. STANDARDS AND APPROVALS

Compliant with installation and manufacturing standards.
 See e.catalogue.

*Contains silver ions that limit the development of bacteria on the surface