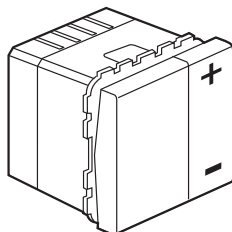


## Mosaic™ Dimmer switch, 600 W

Cat. No(s): 784 05



### 1. GENERAL CHARACTERISTICS

Dimmer switch for controlling lighting devices. Dimmer switch with level memory for switching on with the same light intensity used before switching off or mains cut-off.

Cat. No.	240 V		100 V		Use	
	Max.	Min.	Max.	Min.		
784 05	600 W	40 W	300 W	20 W		Incandescent lamp
	600 W	40 W	300 W	20 W		230 V halogen lamps
	600 VA	40 VA	300 VA	20 VA		Halogen lamp with ferromagnetic transformer

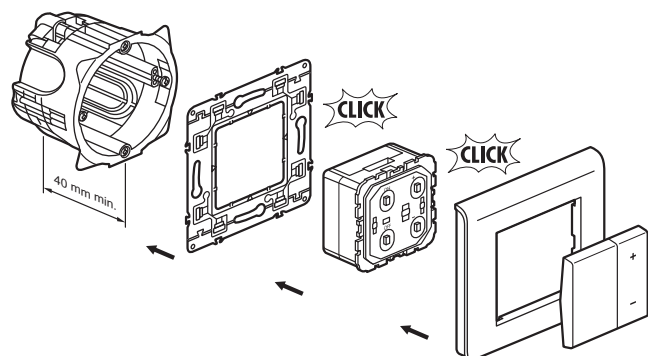
Don't work with: **Halogen lamp with electronic transformer**

### 2. RANGE

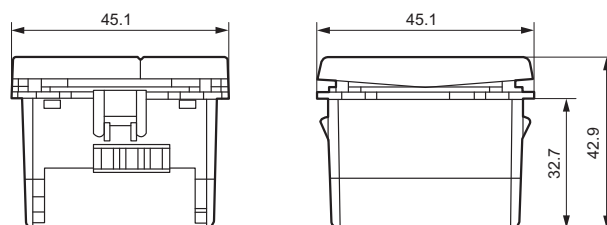
	Designation	Cat. No.	Modules	Connection method	Weight (g)
	Remote-control dimmer switch 600 W	784 05	2 modules	Cage-type	56

### 3. PREPARATION

The mechanisms can be flush-mounted or surface-mounted. Modular mechanisms using adapter Cat. No. 802 99 (2 modules). The mechanisms are mounted on thin walls using adapter Cat. No. 802 91 (2 modules).



### 4. OVERALL DIMENSIONS

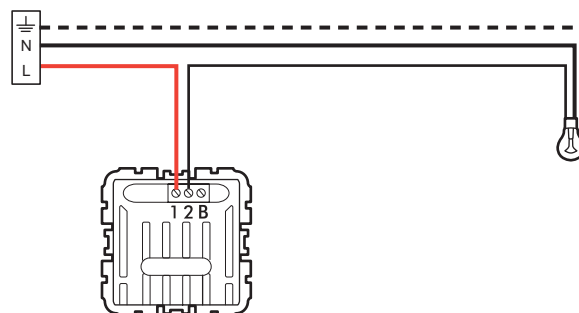


### 5. CONNECTION

Number of terminals	3
Terminal type	Cage-type connector
Terminal capacities	2 x 1.5 mm <sup>2</sup> or 1 x 2.5 mm <sup>2</sup>
Tool	3.5 mm flat-blade screwdriver or Philips No. 1 or posidrive No. 1 or mixed size 0

#### Wiring:

##### 5.1 Connection of one lighting point (factory configuration)



## Dimmer switch, 600 W

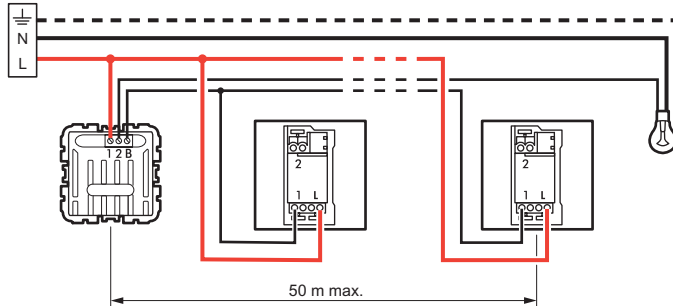
### 5. CONNECTION (cont'd)

#### 5.2 Connection of several lighting points

By combining NO pushbutton (two-way switch function with light dimming from all control points).

Use of the pushbutton connected to the dimmer switch:

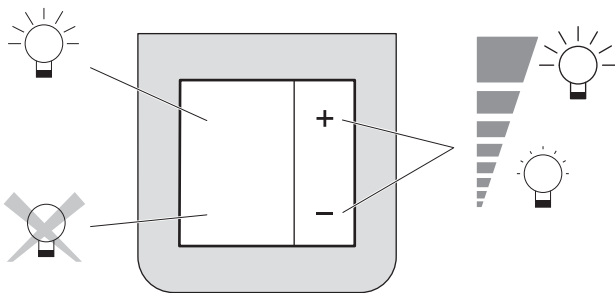
- a short press to switch on/switch off (< 2 s)
- a long press for the dimming function (> 2 s).



#### Important :

The dimmer switch includes a «remote control switch» function that is incompatible with an installation that already contains remote control switches and pushbuttons.

### 6. OPERATION



### 7. TECHNICAL CHARACTERISTICS

#### 7.1 Mechanical characteristics

Impact tests: IK 02

Penetration by solid bodies/liquid: IP 20

#### 7.2 Material characteristics

Base + cover: Polycarbonate

Rockers: ABS (RAL 9003)

#### 7.3 Electrical characteristics

Self-extinguishing: 650°C/30 s

Tension : 100/240 V

Voltage: 2.5 A

Frequency: 50/60 Hz

#### 7.4 Climatic characteristics

Storage temperatures: - 10°C to + 60°C

Operating temperatures: 0°C to + 35°C

### 8. CLEANING

Surface cleaning with a cloth.

Do not use: acetone, tar remover, trichloroethylene

#### 8.1 Resistance to cleaning agents

Resistance to the following agents : Hexane (EN 60669-1), Methylated spirits, Soapy water, Diluted ammonia, Diluted pure bleach 10%, Glass cleaning substance, Pre-impregnated wipes.

#### 8.2 Resistance to hospital-type cleaning agents

Resistance to the following agents: Anios, Surfanios, Bactylsine, Diluted hydrogen peroxide (35%).

**Caution:** A preliminary test should be carried out if other specific cleaning products are to be used.

### 9. CONFORMITY - APPROVALS

Approvals in process: NF - BBJ - VDE - GOST