



Termoplástico  
Termoplastico  
Thermoplastic  
Thermoplastique



-5°C  
+60°C



Autoextinguível  
Autoextinguible  
Self extinguishing  
Autoextinguible



Teste Fio incandescente  
Prueba Hilo Incandescente  
Glow Wire Test  
Test de Fil Incandescent

Ref. + M0  
960°

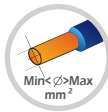
Ref. + M2  
850°



Parafusos aço  
Tornillos acero  
Metalic screws  
Vis metalique



Instalação com Cabos e Tubos  
Instalación con Cables y Tubos  
Install with Cables and conduits  
Installation avec de Câbles et Tubes



Sec. Min>Máx. de cabo em mm  
Sec. Max de cable en mm  
Max.Cable Sec. in mm  
Sec. de câble max en mm



Nº de entradas  
Nº de agujeros  
Nº of entries  
Nº de connections



Bucim PG  
Prensaestopa PG  
PG Cable Gland  
Presse-étoupe PG



Bucim Métrico  
Prensaestopa Métrica  
Metric Cable Gland  
Presse-étoupe Metrique



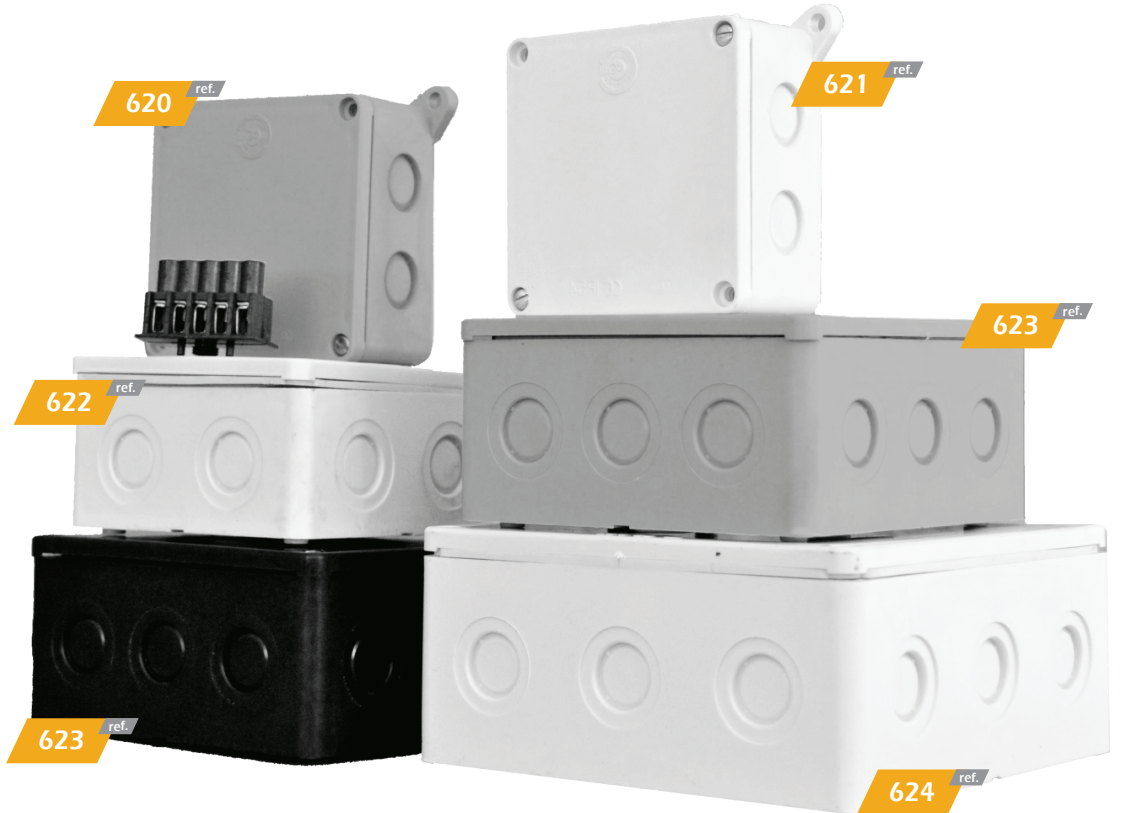
SCAN + INFO

# SERIE 600 CLASSIC

PG 13,5  
M20



Caixas estanques com entradas marcadas (p/uso de buçins PG e Metricos)  
Cajas estancas con entradas marcadas (p/uso de prensaestopas PG y metricas)  
Cable junction enclosures with pre-moulded knock-outs (for use PG and Metric cable glands)  
Boîtes de dérivation étanches (pour presse-étoupes PG et métriques)



Ref.		Dim. Ext(mm)	IP	IK			
620	750°	86x86x34	54	08	8	PG 13,5 / M20	14-25
621	750°	86x86x34	54	08	8	PG 13,5 / M20	14-25
622	750°	101x101x44	54	08	8	PG 13,5 / M20	14-25
623	750°	126x126x54	54	08	12	PG 13,5 / M20	14-25
624	750°	152x152x58	54	08	12	PG 13,5 / M20	14-25

\* Bucim não incluído | Prensaestopas no incluído | Cable glands not included | Presse-étoupes non inclut

Inclui placa de 5 bornes (Ref. 397/5)  
Inclui placa de 5 bornes ( Ref. 397/5 )  
Includes 5 pole connector ( Ref. 397/5 )  
Inclus barrette de connexion 5 poles ( Ref. 397/5 )

397/5 ref.

