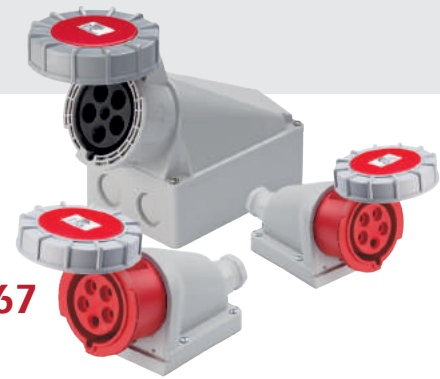
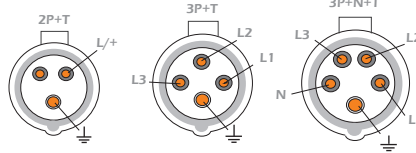


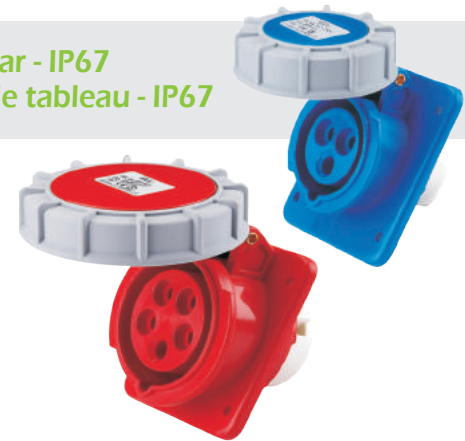
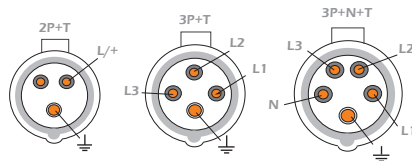
Tomadas parede - IP67 | Bases murales - IP67  
IP67 Wall receptacles | Socles saillies - IP67



Ref.	Polos	Amp.	Hz	Volt.	IP	IK	mm <sup>2</sup>	Ø Cabo (mm <sup>2</sup> )
679316/2	2P+T(E)	16	50/60	250	67	09	1,5-4	10-14
679416/2	3P+T(E)	16	50/60	415	67	09	1,5-4	10-14
679516/2	3P+N+T(E)	16	50/60	240/415	67	09	1,5-4	10-14
679332/2	2P+T(E)	32	50/60	250	67	09	2,5-10	12-17
679432/2	3P+T(E)	32	50/60	415	67	09	2,5-10	12-17
679532/2	3P+N+T(E)	32	50/60	240/415	67	09	2,5-10	12-17
679363/6	2P+T(E)	63	50/60	250	67	09	6-25	18-25
679463/6	3P+T(E)	63	50/60	415	67	09	6-25	18-25
679563/6	3P+N+T(E)	63	50/60	240/415	67	09	6-25	18-25



Tomadas interiores - IP67 | Bases de empotrar - IP67  
IP67 Panel mounted receptacles (angled) | Socles de tableau - IP67



Ref.	Polos	Amp.	Hz	Volt.	IP	IK	mm <sup>2</sup>
679316/1	2P+T(E)	16	50/60	250	67	09	1,5-4
679416/1	3P+T(E)	16	50/60	415	67	09	1,5-4
679516/1	3P+N+T(E)	16	50/60	240/415	67	09	1,5-4
679332/1	2P+T(E)	32	50/60	250	67	09	2,5-10
679432/1	3P+T(E)	32	50/60	415	67	09	2,5-10
679532/1	3P+N+T(E)	32	50/60	240/415	67	09	2,5-10
679363/5	2P+T(E)	63	50/60	250	67	09	6-25
679463/5	3P+T(E)	63	50/60	415	67	09	6-25
679563/5	3P+N+T(E)	63	50/60	240/415	67	09	6-25



SCAN + INFO