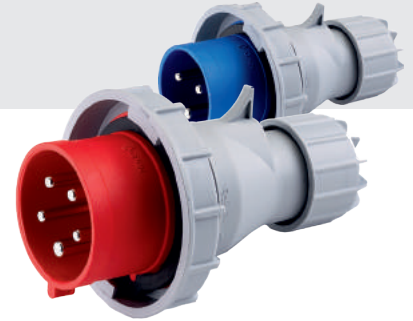
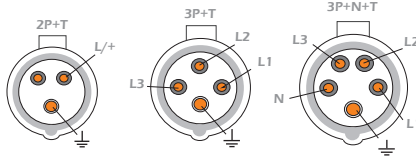


Fichas - IP67 | Clavijas - IP67
IP67 Plugs | Fiches - IP67



Termoplástico
Termoplastico
Thermoplastic
Thermoplastique



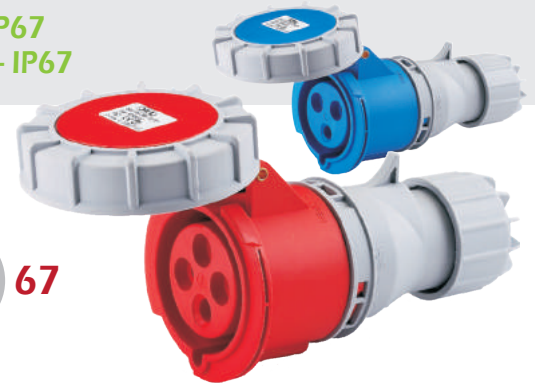
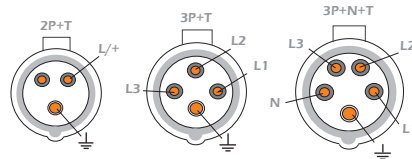
-5°C
+80°C



| Ref. | Polos | Amp. | Hz | Volt. | IP | IK | mm ² | Ø Cabo (mm ²) |
|----------|-----------|------|-------|---------|----|----|-----------------|---------------------------|
| 679316/4 | 2P+T(E) | 16 | 50/60 | 250 | 67 | 09 | 1,5-2,5 | 8-12 |
| 679416/4 | 3P+T(E) | 16 | 50/60 | 415 | 67 | 09 | 1,5-2,5 | 8-12 |
| 679516/4 | 3P+N+T(E) | 16 | 50/60 | 240/415 | 67 | 09 | 1,5-2,5 | 8-12 |
| 679332/4 | 2P+T(E) | 32 | 50/60 | 250 | 67 | 09 | 2,5-6 | 12-17 |
| 679432/4 | 3P+T(E) | 32 | 50/60 | 415 | 67 | 09 | 2,5-6 | 12-17 |
| 679532/4 | 3P+N+T(E) | 32 | 50/60 | 240/415 | 67 | 09 | 2,5-6 | 12-17 |
| 679363/8 | 2P+T(E) | 63 | 50/60 | 250 | 67 | 09 | 6-16 | 16-30 |
| 679463/8 | 3P+T(E) | 63 | 50/60 | 380/415 | 67 | 09 | 6-16 | 16-30 |
| 679563/8 | 3P+N+T(E) | 63 | 50/60 | 240/415 | 67 | 09 | 6-16 | 16-30 |



Tomadas móveis - IP67 | Prolongadores - IP67
IP67 Connectors (couplers) | Prises mobiles - IP67



| Ref. | Polos | Amp. | Hz | Volt. | IP | IK | mm ² | Ø Cabo (mm ²) |
|----------|-----------|------|-------|---------|----|----|-----------------|---------------------------|
| 679316/3 | 2P+T(E) | 16 | 50/60 | 250 | 67 | 09 | 1,5-2,5 | 8-12 |
| 679416/3 | 3P+T(E) | 16 | 50/60 | 415 | 67 | 09 | 1,5-2,5 | 8-12 |
| 679516/3 | 3P+N+T(E) | 16 | 50/60 | 240/415 | 67 | 09 | 1,5-2,5 | 8-12 |
| 679332/3 | 2P+T(E) | 32 | 50/60 | 250 | 67 | 09 | 2,5-6 | 12-17 |
| 679432/3 | 3P+T(E) | 32 | 50/60 | 415 | 67 | 09 | 2,5-6 | 12-17 |
| 679532/3 | 3P+N+T(E) | 32 | 50/60 | 240/415 | 67 | 09 | 2,5-6 | 12-17 |
| 679363/7 | 2P+T(E) | 63 | 50/60 | 250 | 67 | 09 | 6-16 | 18-30 |
| 679463/7 | 3P+T(E) | 63 | 50/60 | 415 | 67 | 09 | 6-16 | 18-30 |
| 679563/7 | 3P+N+T(E) | 63 | 50/60 | 240/415 | 67 | 09 | 6-16 | 18-30 |



IPCODE 6 - No ingress of dust complete protection against contact.
7 - Immersion in water up to 1 meter



SCAN + INFO

